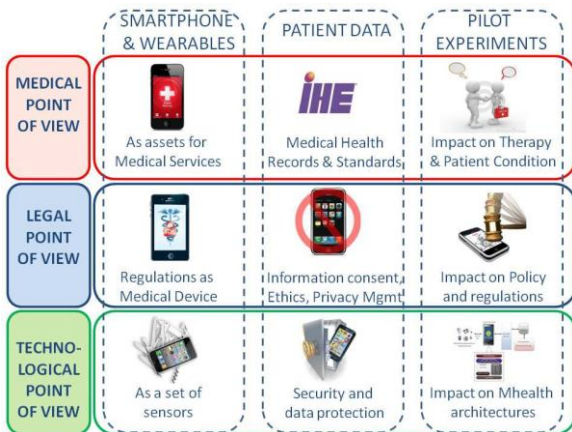


Next Generation Mobile Platforms for HeALTH, in Mental Disorders.

NYMPHA project focuses on the implementation of a Pre-Commercial Procurement of **mobile ehealth services** for supporting physicians and patients in **the treatment of bipolar disorder** through continuous patients monitoring in order to dynamically support illness management and potentially identify early deviations in mood and attitudes suggesting the onset of a crisis. Such innovative approach in treatment will allow the early intervention of professionals and a personalized and continuous feed-back to patients about warning signs and indications for referral to professionals and self-management.



From this point of view, access to interactive tools able to deliver **psycho-education and self-help sessions according to standardized and effective models** will be available. The monitoring model of such type of approach would be based on a portable data acquisition system able to obtain continuous objective measurements of patients behaviour related to their clinical state, also giving feed-backs and visualizing data to patients, thus enhancing patients' awareness and empowering attitude and supporting their self-management, with the support of ICT.

Objectives and results

1. To define a **common framework of cooperation for Trans-National PCP in the topic of mobile health services for supporting bipolar disorder treatment among public purchasers** in three different EU Countries (namely Italy, Spain and Denmark)
2. To produce and launch a **Call for Tender on mobile health services for supporting bipolar disorder treatment by taking into consideration the key clinical, ethical, technological and legal issues**, and launch it at wide European level and to **manage the tenderer selection in a fair and transparent way**.
3. To conduct a **three stage PCP process** including feasibility studies, prototyping and pilot implementation of the PCP services on mobile health for bipolar disorder treatment involving industrial participation (including SMEs).

PCP model

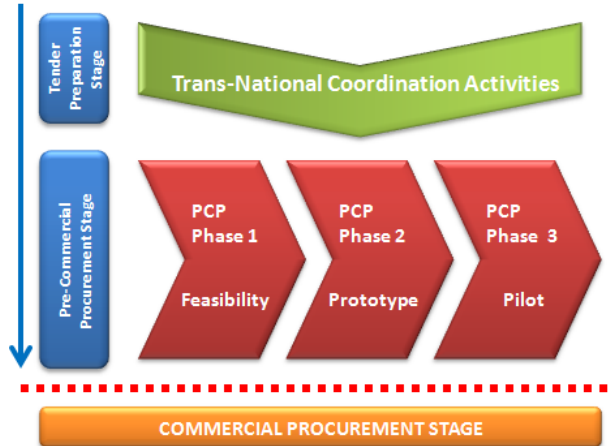
The three-phase approach of the PCP is described below:

1. Feasibility of the Solution

This phase will consist in the presentation of innovative technological solutions and the production of feasibility studies comprising the proposed technologies, the sustainability of the service, the economic expected impacts, the relevance of the proposers to mobile health domain and the organizational aspects of the implementation. Participants to this phase will produce a report containing the results of the feasibility study.

2. Prototyping Phase

This phase will start with the selection of a subset of proposers of the feasibility plan each to conduct the development of a working prototype of the solution. Within this time, the prototypes will be built and evaluated in order to identify the extent on which they fulfil the expected requirements defined by the tender in terms of performance, functionalities and technical stability.



3. Pre-Commercial Pilot

The third phase of the Joint Research Activities will consist in the implementation of the pre-commercial pilot in the three sites (Trento, Copenhagen and Barcelona). The objective of this phase is to assess and evaluate the proposed PCP solutions as a result of the implementation of the defined functionalities into a pilot test involving a limited number of users operating in real-life conditions.



CREATE-NET

www.create-net.org



PAT – Autonomous
Province of Trento

<http://www.provincia.trento.it/>



CSPT - Consorcio Sanitario
Parc Tauli

<http://www.tauli.cat/tauli/cat/default.htm>



RegionH - Mental Health
Services in the Capital
Region Copenhagen

<http://www.psykiatri-regionh.dk>